



St. James' CE Primary School

Accessibility Plan

Vision and Values

Our vision is to continue to improve the facilities and access for all members of our school community. We are dedicated to a programme of improvements which allows us to address issues related to disabled access and provision of the full curriculum to pupils. We strive to remove barriers for all pupils where possible and are committed to providing access to the life of the school for all our pupils. We are committed to the 3 principles set out in the national curriculum inclusion statement:

- Setting suitable learning challenges.
- Responding to pupils' diverse learning needs.
- Overcoming potential barriers to learning and assessment for individuals and groups of Pupils.

The outcomes for all children are important and we respect the individual needs of everyone. Our pedagogy, philosophies, values, beliefs and actions aim to promote and ensure equal opportunities for all.

Information and Data

The Equalities Act (2010) defines a disabled person as someone who has a physical or mental impairment that has a substantial and long-term adverse effect on his or her ability to carry out normal day-to-day activities.

The following documents will support the Accessibility Plan and will directly influence the proposed actions/targets of this plan:

1. Statement on the school's website inviting queries regarding provision of services in relation to the Equalities Act (2010) from parents, carers, governors and other users of the school's premises.
2. Consultation with the School Council and with children who may have a disability.

3. Letter to staff issued by LA asking for information with regard to disability.
4. Staff discussions regarding access issues.
5. Annual review by the schools' governors (Buildings and Finance) of the Accessibility Plan.

Adjustments will be made in the light of any comments made as appropriate.

Coordination

The Headteacher will coordinate the plan in direct consultation with all stakeholders.

Availability of the Plan

A copy of the plan is available on request from the School Office and on the school's website.

Telephone: 01684 561207

Website: <http://www.stjames.worcs.sch.uk/>

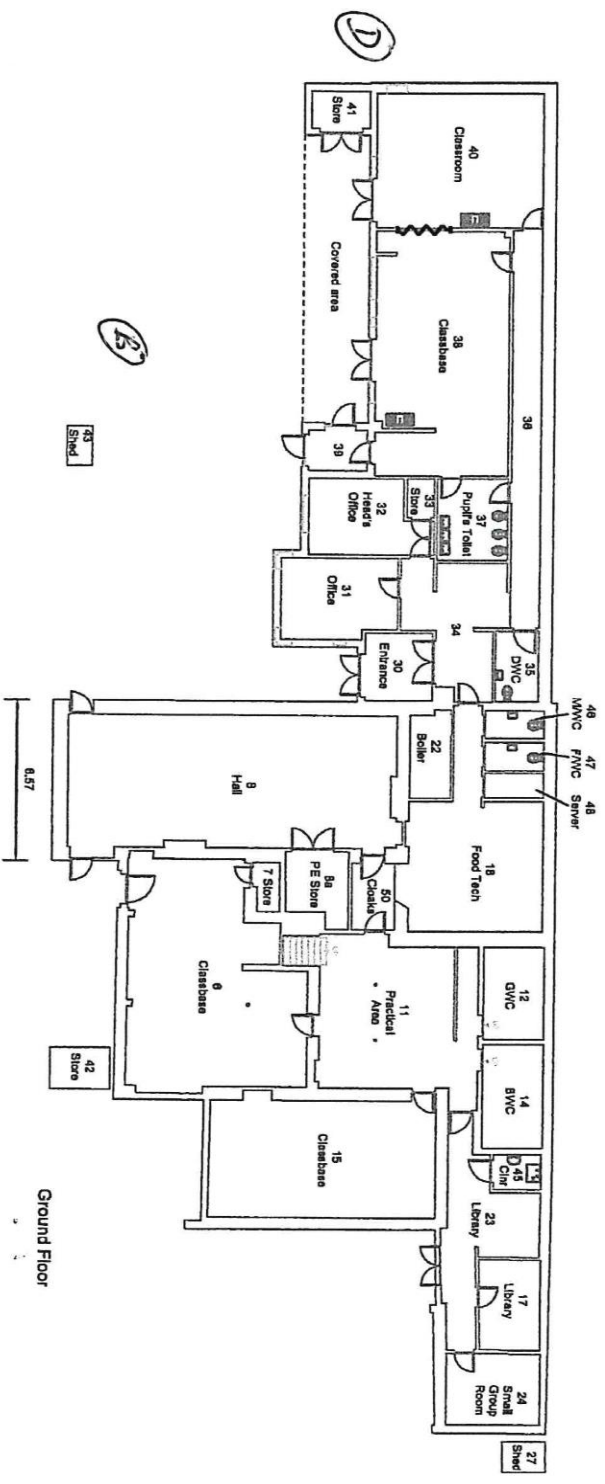
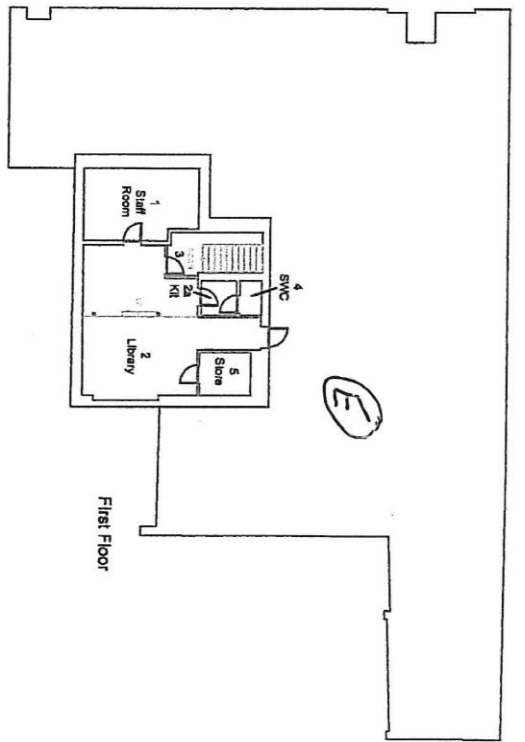
Plan Details

<u>Site Access/Facilities</u>		
<u>Target</u>	<u>Action</u>	<u>Timescale</u>
Ensure access to school buildings and site is as good as is reasonably practicable (see Site Plan and Schedule below).	Set out clearly limitations of site in school information.	Ongoing.
Ensure classrooms are organised appropriately to meet specific needs.	Plan layouts and resources in accordance with needs. Relocate provision of special resources if necessary.	Ongoing.
<u>Curriculum Access</u>		
Identify areas of need in lesson planning and delivery.	Ongoing staff training. Purchase of specific equipment to support needs.	Ongoing.
Ensure access to ICT equipment is a priority where appropriate for those identified as having a specific need.	Appropriate deployment of resources.	Ongoing.
Strive to include those with specific needs in as many curriculum activities.	Risk assess each activity, adapt and deploy support as necessary.	Ongoing.

<u>Access to Information</u>		
Provide newsletters and other documents in alternative form if required.	Use coloured paper, larger print and/or audio formats.	Ongoing.
Ensure all policies and other documents take equal access in to account.	Reviews of all policies to include consideration of equal opportunity implications.	Ongoing.

Schedule of Physical Limitations to Site

- A. Drive way to School is steep and not generally open vehicles.
No designated disabled parking space within site nor on public road.
- B. Step at gate to path to school entrance.
Access path very steep.
- C. Forest School area is remote from school on hillside and access is not easy with steep paths.
- D. Roof top playground is accessed via external stairs.
- E. First Floor access via steep stairs, has varying levels and emergency exit via steps to flat roof area.



Accessibility Plan

Notes

Worcestershire County Council has complete confidence in the quality of information contained in this tiledrawing. However, Worcestershire County Council accepts no responsibility for information taken from this drawing unless authorisation has been given in writing by the AM/CP section of Property Services. Any dimensions required must be confirmed by site measurement.

Revisions

- A 05/07 Block layout revised.
- B 07/10 Two classroom extension.
- C 02/14 Internal refurbishment, Room usage changes, Stair 43 moved and new stair 49.



Property Services
 P & J Parker FRICS
 Head of Property Services, County Hall
 Stoney Road, Worcester WR2 2RP
 Tel: 01905 759763

Project: St. James' C.E. Primary School,
 West Malvern Road,
 Malvern,
 Worcestershire,
 WR14 4BS

Asset Management Plans

Drawing title: Ground & First Floor Layout Plan
 Scale: @A3 1:200 Date: Feb 2008
 Drawn: R.B. Checked: N.A.
 email: property@worcestershire.gov.uk
 Site Ref: CPA1
 Project No:

Drawings: MH/CPA/1/1
 Drawing status: C